

FILED FOR RECORD
MARTIN COUNTY, FLA.
1973 JAN -9 PM 1:39
DAPHNE PIERCE
CLERK OF CIRCUIT COURT

I HEREBY CERTIFY THAT I HAVE EXAMINED THE ATTACHED PLAT AND FIND THAT IT COMPLIES IN FORM WITH CHAPTER 177 FLORIDA STATUTES AND WAS FILED FOR RECORD IN PLAT BOOK 5, PAGE 30, THIS 27th DAY OF JANUARY 1973 IN THE OFFICE OF THE CLERK OF THE CIRCUIT COURT AT STUART, MARTIN COUNTY, FLORIDA.

Louise V. Isaacs
CLERK OF THE CIRCUIT COURT

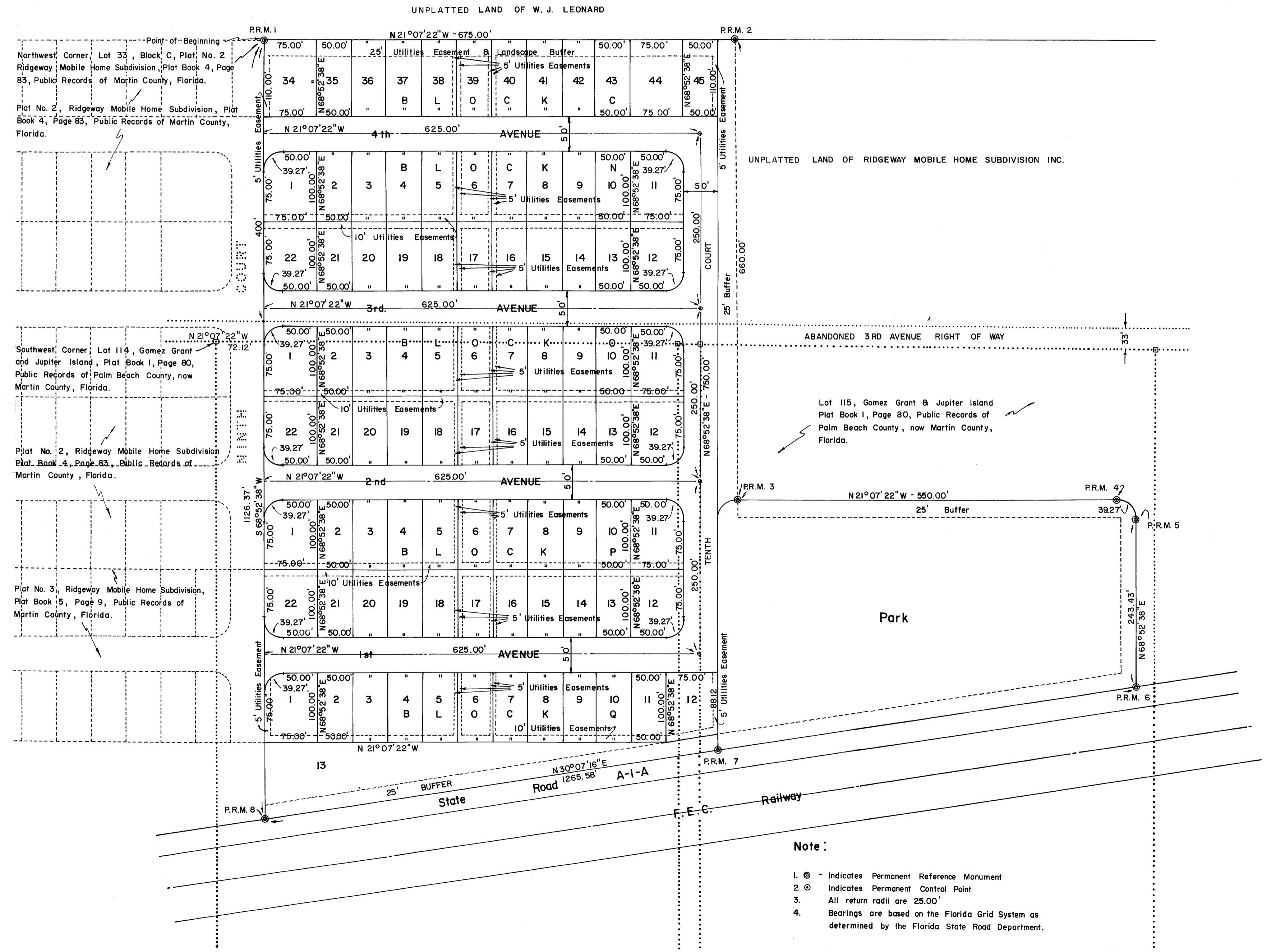
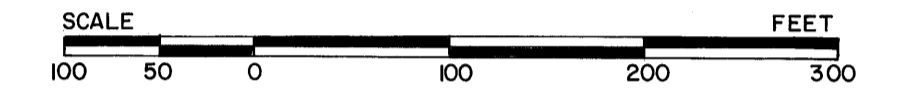
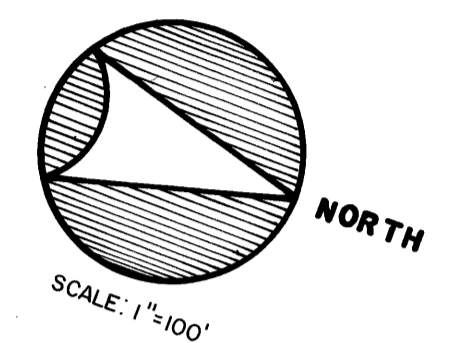
FILE NO. 18812 By: Stafford & Brock, P.C.

PLAT NO. 5

RIDGEWAY MOBILE HOME SUBDIVISION

MARTIN COUNTY FLORIDA

SHOWING A REPLAT OF A PORTION OF LOTS 114 AND 115, PLAT OF GOMEZ GRANT AND JUPITER ISLAND, WEST OF THE RIVER, PLAT BOOK 1, PAGE 80, PUBLIC RECORDS OF PALM BEACH COUNTY, NOW MARTIN COUNTY, FLORIDA. MORE PARTICULARLY DESCRIBED AS FOLLOWS: BEGIN AT THE NORTHWEST CORNER, LOT 33, BLOCK C, PLAT 2, RIDGEWAY MOBILE HOME SUBDIVISION, PLAT BOOK 4, PAGE 83, PUBLIC RECORDS OF MARTIN COUNTY, FLORIDA, THENCE RUN N 21°07'22"W, A DISTANCE OF 675.00 FEET; THENCE RUN N 68°52'38"E, A DISTANCE OF 660.00 FEET; THENCE RUN N 21°07'22"W, A DISTANCE OF 550.00 FEET; THENCE RUN ALONG A CURVE OF RADIUS 25.00 FEET, CONCAVE TO THE SOUTHEAST, THROUGH A CENTRAL ANGLE OF 90°00'00", A DISTANCE OF 39.27 FEET; THENCE RUN N 68°52'38"E, A DISTANCE OF 243.43 FEET TO A POINT ON THE WESTERLY RIGHT OF WAY OF STATE ROAD A-1-A, THENCE RUN S 30°07'16"E ALONG SAID RIGHT OF WAY, A DISTANCE OF 1265.58 FEET; THENCE RUN S 68°52'38"W, A DISTANCE OF 1126.37 FEET TO THE POINT OF BEGINNING.



Note:

1. ⊙ - Indicates Permanent Reference Monument
2. ⊙ - Indicates Permanent Control Point
3. All return radii are 25.00'
4. Bearings are based on the Florida Grid System as determined by the Florida State Road Department.